

**Department of Earth Sciences
University of Cambridge**



**MASt in EARTH SCIENCES
COURSE GUIDE 2020-21**

Contents

1.	Introduction to the Course	3
2.	Department of Earth Sciences Map	5
3.	Navigating the Department	6
4.	Department Facilities	7
5.	Libraries	8
6.	Department Computing Facilities and Training	9
7.	Course Format and General Information	11
8.	MASt Options and Course Documentation	13
9.	MASt Project and Managing Research Time	14
10.	Reading a Scientific Paper	15
11.	Examinations	16
12.	Marking Criteria	18
13.	Laboratory Safety and Conduct	19
14.	Feedback processes and Complaint procedure	20
15.	Earth Sciences and Disability	22
16.	Plagiarism Statement	23

1. Introduction to the Course

Welcome to Cambridge and welcome to the Master of Advanced Studies in Earth Sciences course. Having demonstrated your potential as high-achieving undergraduates, you now have the opportunity to put all of that learning into practice. You are joining our own cohort of fourth-year MSci students in a relatively intensive year of independent research, upper-level course work, research seminars and field work. As in your previous degree, the overarching goal is to understand how the planet works, though the MAST approach to getting there will be quite different. Rather than just soaking up text-book information, you are now in the business of generating your own data, and critically assessing that of others. At the same time, you should be thinking beyond and between the boundaries of conventional undergraduate coursework, if only to exploit the rich veins of multi-disciplinary insight. The MAST course is designed to take you in this direction – a stepping stone to advanced PhD research, or any number of other career paths requiring analytical ability, intellectual dexterity and self-motivation.

There are three principal components to the Cambridge MAST in Earth Sciences:

1) The research project. This is the centrepiece of the course, where you address a particular research question over the first two terms, and submit a report demonstrating your ability to generate new observations, data and ideas. Importantly, the success (and grading) of these projects is not measured in absolute results, but the approaches you take in pursuing them. Your project supervisor will be there for general guidance, but it is up to you to drive the work forward, and in the direction you think it should go. The key to success is to do lots of reading, attend lots of seminars, ask lots of questions.

2) Option courses. The other major component of the MAST programme is lecture- and practical-based option courses. At least 14 (usually more) of these advanced courses are offered each year – from which you will officially take six. The topics covered may change from year to year, but they will always cover a full range of Earth Sciences sub-disciplines. The exams for all option courses are held in Easter Term; examiners will be looking for a mature, close to research-level of understanding of the course content. The key is to do lots of reading, arrange supervisions, ask lots of questions.

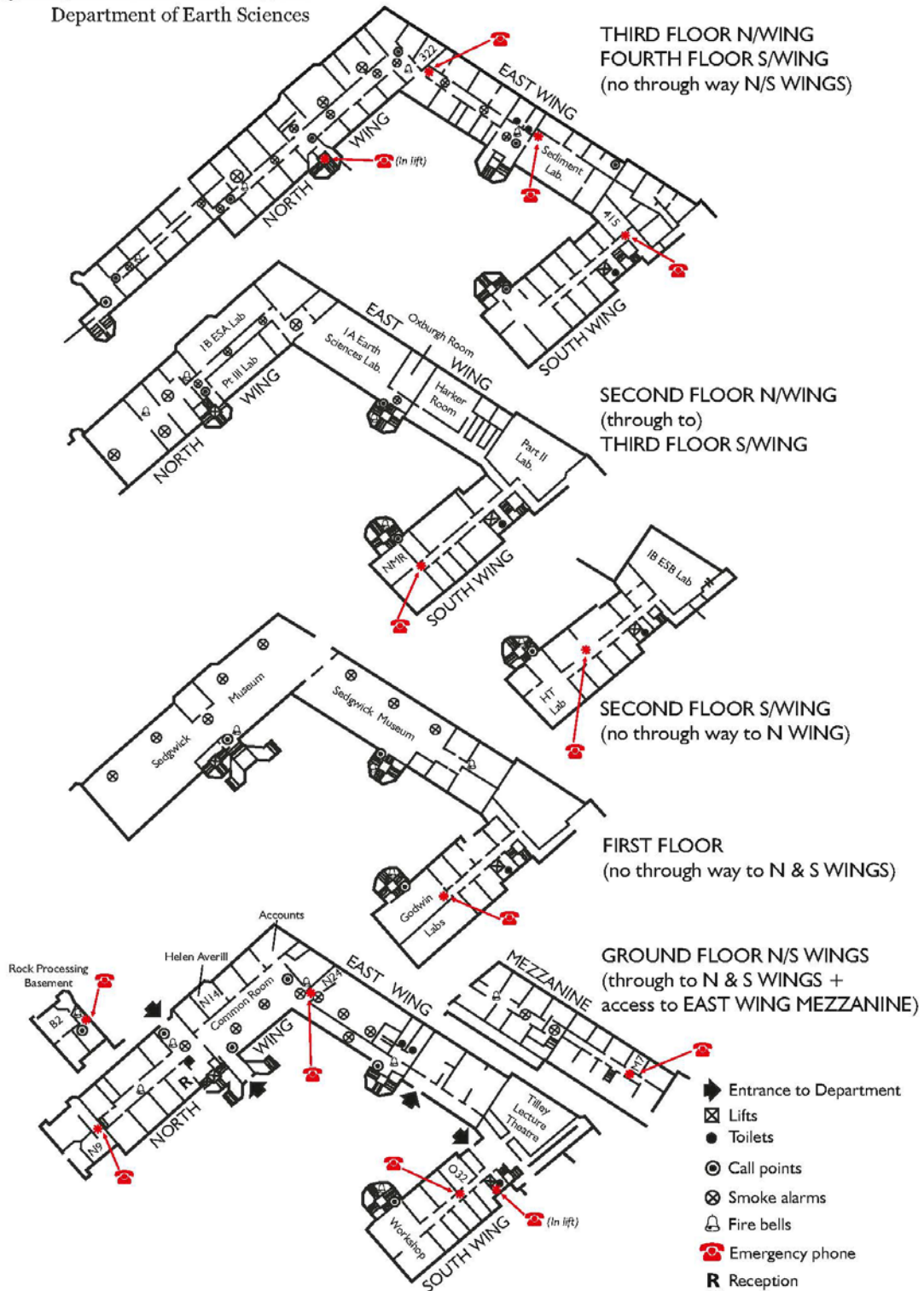
3) Seminars and the Easter field trip. The Department hosts a broad range of seminars and seminar series, and you should make it your business to attend as many as possible. This is the best way of tracking the very latest research in your areas of interest, and seeing how it gets done (and presented). The Departmental Seminars and Bullard Seminars (all available online in 2020-21) are particularly recommended. A short seminar series at the beginning of Easter Term will address issues and research broadly inspired by the Easter field trip. The field trip to South East Spain – is in some sense a revision of the MAST course – and one of

its highlights usually takes place in the Easter vacation. Due to Covid-19 the field trip may not go ahead. Details will be circulated nearer the time.

Due to the Covid-19 pandemic it is clear that the 2020-21 academic year will be far from normal. The Department will be doing everything possible to keep projects, lecture courses and seminars running to schedule, but issues will inevitably arise. Rest assured that assessment criteria will be adjusted accordingly.

Nick Butterfield (MASt Course Coordinator)
njb1005@esc.cam.ac.uk

2. Department of Earth Sciences Map



3. Navigating the Department

- The main building of the Department comprises a North Wing fronting onto Downing Street, an East Wing, bordering Downing Place, and a South Wing protruding into the Downing Site. The plan on page 2 shows this layout, including the locations of various lecture rooms and laboratory facilities.
- The majority of Part III and MAST teaching will be in either of the Harker rooms (second floor, East Wing), or the Tilley Lecture theatre (ground floor, South Wing). Please ensure you use the one-way system in the Department and the appropriate stairway for your lecture and practical rooms.
- The Teaching Support Manager, Helen Averill, is in Room N14 off the Common Room, and can be contacted at hpd20@cam.ac.uk. Speak to Helen about anything related to the course. Mitha Madhu (mm853@cam.ac.uk) is the Teaching Assistant and can also assist with general course enquiries.
- The Earth Sciences Library is on the second floor of the North Wing. The librarian, Sarah Humbert (sih24@cam.ac.uk), has an office just inside the Library entrance.
- The Department Common Room is on the ground floor of the North Wing. There is a snack machine in the lobby at the east end of the Common Room and a drinks machine near the Reception Office (note, these are unlikely to be operating in 2020-21).
- The Kitchen is opposite Reception. Get drinking water here rather than from taps in the toilets. Please take water in bottles rather than cups to avoid spills.
- The main toilets are located a) on the ground floor at the bottom of the East Wing staircase, b) on the South Wing staircase (Gents and Women on alternate floors), c) at the top of the East Wing staircase. There is a toilet with disabled access near Reception. All staff, postgraduates, Part II, Part III and MAST students have pigeonholes or mail folders in the North Wing Foyer next to Reception.
- Most of our communication with you will be via e-mail. *Please* ensure that you check your @cam.ac.uk account regularly and respond promptly when necessary.

4. Departmental Facilities

- **Desk space** will be provided for Part III and MAST students for 2020-21. You will each have a desk assigned in either the Library or the Part III lab where you can work or leave books/papers/coats. These will be appropriately spaced and the same Covid rules will apply as are set out for PhD students.
- **The Common Room** is on the ground floor of the North Wing. Coffee and tea are available for a nominal fee in the vestibule near Reception, from 10.30-11.30am and 15.30-16.30 pm. Unfortunately, this service has had to be cancelled for this term due to the pandemic. If Covid restrictions are relaxed, social use of the Common Room may return to normal.
- **The Earth Sciences Library**, on the second floor of the North Wing, is an important area for studying, digging up research materials, and generally keeping connected. It also holds, or gives you access to, pretty much everything you will need in the way of printed or on-line literature. Please check for opening times for 2020-21. Again, access to the Library will be conspicuously more limited this year, due to Covid-19.
- **The Sedgwick Museum** – entrance on the 1st floor of the North Wing – has a large collection of fossil, rock and mineral material. Admission is free and you are always welcome to visit.
- **The Sedgwick Museum Shop**, immediately inside the museum entrance, sells geological equipment and some books. The shop also sells a wide range of specimens and gifts: an inflatable dinosaur may be just the birthday present for that ‘difficult to buy for’ relative!
- **The Sedgwick Club**, the student geology society, arranges evening talks, field trips, and social events. You will find contact information on and event details on the [Sedgwick Club website](#).

5. Libraries

Department library

- The Department Library has wealth of resources, and you are encouraged to use them in every possible way. The Librarian is Sarah Humbert (sih24@cam.ac.uk), who knows everything there is to know about digging up literature, and how the system works. She will give an introduction to the Library and its facilities at the beginning of Michaelmas term (online). You will also find the [Library webpage](#) very useful. Due to the pandemic, access to the Library will be more limited than usual, but Sarah is still expecting to be in her office most afternoons, and can always be contacted by email.
- Once you have been registered in the Department, you are welcome to borrow up to five books from the Library at any one time. Be warned that fines for late return of short loans are high: £1 per hour late.
- In addition to books and journals, the Library has a large geological map collection which you are welcome use – discuss access details with Sarah.

Contact the library for any questions or requests and to make arrangements for pick up or returns: libraryhelp@esc.cam.ac.uk or sih24@cam.ac.uk. And watch out for other developments, such as a chat box on the Library web pages or daily Zoom sessions.

CamGuides

[CamGuides](#) is a free online resource for all Master's students at the University of Cambridge. It offers an introduction to the range of academic, digital and research resources likely to be used in your studies. The content has been developed by Cambridge University Libraries as part of the Cambridge Information Literacy Network, and has the support of the [Cambridge Centre for Teaching and Learning](#). The CamGuides website does not require Raven access, and you will have access to the resource throughout your time in Cambridge.

6. Department Computing Facilities and Training

The Computing Code of Conduct covers the use of computing equipment by staff and other authorized persons in the Department of Earth Sciences. Please familiarize yourself with it.

Details of Department computing facilities usually available to students are listed below. Due to Covid-19, access to some of the hardware components will be restricted. Please check with the [Computer Office](#) for further information:

	Library	Galson Sciences Lab (N312)	Printer Room (S212)	Part 1B Lab (S213)	Part II Lab (S322)
HARDWARE					
Windows/Linux PCs	X	X			
Linux PCs, Macs		X			
Windows Only PCs				X	X
Colour Printer (up to A3)	X		X		
Colour Plotter (up to A0 poster size)		X			
Black and White Printer (up to A4)		X			
Scanner	X (Copier plus two scanner 9600×4800)	X (Scanner 9600×4800)	X (Copier)		
SOFTWARE					
MS Office	X	X		X	X
Arc GIS	X	X		X	X
Origin	X	X		X	X
Matlab	X	X		X	X
Mathematica	X	X		X	X
Igor	X	X		X	X
Inkscape(drawing), GIMP(image manipulation, Scribus(poster making)	X	X		X	X
Libre Office, Open Office	X	X		X	X
Standard Linux Applications (including GMT and R)	X	X			

Training in computer skills

The University Computer Service offers a portfolio of training courses throughout the year. You are strongly advised to attend relevant courses, either to upgrade your own abilities in a particular area, or to learn a new skill in an area required for your research. Most of these courses will assume you have basic computing skills.

All of these courses are available free of charge to students, but you must book places in advance. Registration is online via the [UIS Training web page](#), which includes a full timetable and course descriptions. Please cancel any bookings that you are not able to attend (via the same website).

The courses most likely to be of interest to MAST students will be:

- Bibliographic software
- Databases
- Desktop Publishing
- Graphics and photo/image processing
- Multimedia
- Presentation software (PowerPoint)
- Programming
- Spreadsheets
- Statistical and mathematical software
- Unix (inc. Linux)
- Web page authoring

The [UIS Training web page](#) also offers a wide range of 'self-taught' courses.

7. Course Format and General Information

Michaelmas Term:

Option courses	Up to six @ 12-16 hours (two 1.5- or 2-hour sessions p/w x 4 weeks)
Project	12 hours per week
Seminars	two seminars per week

Optional attendance of Part II Core courses

Lent Term:

Option courses	Up to six @ 12-16 hours (two 1.5- or 2-hour sessions p/w x 4 weeks)
Project	12 hours per week
Seminars	two seminars per week
Poster	3–4 preparation days, dates to be confirmed
Field Trip	To be confirmed

Optional attendance of Part II Core courses

Easter Term:

MASt seminars	five-six invited seminars, early May
Student project talks	Dates to be confirmed
Student-organised supervisions and revision.	

Options courses

Students take **six Option Courses** from a relatively broad offering of topics (published at the beginning of the academic year). Three of these options are ‘interdisciplinary courses’ that stretch between University departments (Chemistry, Earth Sciences, and Physics). Please consult your Director of Studies before deciding on IDP courses taught outside the Department (IDP1 and IDP3) as they require a certain degree of background knowledge.

Note: You are welcome to attend any MASt lectures that you might find useful.

Research Project

You are advised to spend around 12 hours per week on your research project in the Michaelmas and Lent Terms. If you are doing a lab-based project, you will need to fill in a hazard assessment form. Please contact the relevant lab supervisor.

If necessary, the Department can prepare up to ten thin sections of key rocks associated with your project. Samples should be handed in to Reception along with a completed thin-section form providing specific requirements. Please draw a line round the rock in felt tip pen to indicate how you wish the rock to be cut.

The research report must not exceed 7500 words, and must be accompanied by relevant notebooks and the original research proposal (bound in as an appendix). **The Report must be submitted by 4pm Friday 12 March. Be aware of the penalties for missing this deadline: five per cent of the maximum mark available for the report will be subtracted**

for each day, or part of a day, that submission is delayed. Only under exceptional circumstances, and with advance notification, will any exceptions be considered.

Supervision for option courses

Most lecturers will arrange small group tutorials or 'supervisions' for their MAST courses, but students are encouraged to take advantage of the supervision system more generally. Feel free to approach lecturers for additional sessions or the names of alternative supervisors. You should aim to have at least two supervisions per option course.

Weekly Seminars

Attending seminars is a key component of the MAST course, an opportunity to take in the latest research in Earth Sciences, and to think critically about it. The Department Seminar Series and the Bullard Seminar Series will be available online, with the relevant links circulated weekly by email. There are also PhD student seminars on Friday afternoons. All seminar details are published on the [Department of Earth Sciences seminar page](#).

Posters

All MAST and Part III students are asked to prepare and present a poster on their research project. Under normal circumstances, these would be presented in an open poster session in the Department Common Room. This year, alternative online presentations are likely to be necessary and details will be provided nearer the time. Either way, this is a great opportunity to get feedback on your project work at the halfway point, and to gain experience in science communication. The poster itself is not examined and does not contribute to your final mark.

Project presentations

All MAST and Part III students are required to prepare and present a short presentation on their research project, including a 10-minute talk and 5 minutes for follow-up questions. These are scheduled for the Easter Term (further details to be arranged nearer the time). All Part III and MAST students are expected to attend all of the sessions, and there is an open invitation to other members of the Department. Like the poster presentation, this oral presentation is not assessed.

Field Trip

The field trip to Spain usually runs in late March/early April. The cost to students is a nominal £135. If the trip goes ahead in 2021 an online registration form will be circulated in December. You will be kept informed of any changes or updates, as they arise.

MASt Easter Seminars

A series of research seminars will be presented specifically for MAST and Part III students in the first two weeks of Easter Term. These have typically followed up on aspects of the Spain field trip, but might be somewhat less thematic this year.

8. MAST Options and Course Documentation

The full Options list for MAST Earth Sciences, plus timetables can be found on MAST Course on [Moodle](#). You can also set up your own personal timetable based on your option choices, using the online University [Timetable](#).

Reading lists will be available on Moodle, and lecture notes and other course documentation will be added to Moodle throughout the year. Please speak to Helen Averill or Mitha Madhu if you are having any problems with access.

MASt Options 2020-21

1. Jackson/Copley - Continental tectonics and mountains
6. Gibson – Solid Earth volatile cycles
7. Edmonds/Woods - Volcanology: physical mechanisms and petrological processes
8. Williams/Tosca et al - Planetary chemistry and evolution
9. Rudge/Maclennan - Magma dynamics
12. Carpenter - Magnetoelastic coupling in minerals and functional materials
13. Harrison - Magnetism of Earth and planetary materials
14. Ringe - Electron microscopy (M8)
15. Farnan - Nuclear materials (M17)
16. Field - Amniote palaeobiology
17. Edmonds/Jackson - Natural hazards
18. Rhodes/Wolff/Bauska - Frontiers of ice core science
19. Copley/Davies/Weller - Earth history
20. Turchyn/Hodell - Isotope Geochemistry
21. Rawlinson/Neufeld/Al-Attar - Computational Geosciences
22. Butterfield - Palaeobotany
- IDP1 - Pyle/Schmidt - Atmospheric chemistry & global change
- IDP2 – Skinner/Wolff - The Earth system and climate change
- IDP3 - Deschler/Dutton/Rao - Renewable energy: concepts, materials & device physics

9. MAST Project and Managing Research Time

The MAST project is an opportunity for you to develop your own ways of planning and executing a research project. Whilst individual styles of research vary, there are some common features:

1. Most research projects have a number of components in common, for instance *data gathering, data analysis, learning of techniques, library work, writing, drafting diagrams, and general 'housekeeping'*.
2. These components do not need to be done in sequence, and can be overlapped to make the best use of time. Avoid falling into the trap of leaving your report writing until the very end. It's not until you try explaining your results to others that the gaps in your data and analytical reasoning will appear.
3. Different research tasks require different levels of concentration, allowing less demanding tasks to be done when you might otherwise feel too tired to make progress. Drafting diagrams, for example, typically requires less concentration than writing text.
4. Do not expect your research, however well planned, to proceed in a straight line towards your final report. Most successful projects involve a good number of blind alleys, backtracks, and technical hitches. Learn from these rather than get frustrated by them. It's also worth appreciating that your project will be assessed on how you went about investigating the relevant issues, rather than successful results *per se*.

10. Reading a Scientific Paper

Why read this paper?

How you tackle a paper depends largely on your reasons for reading it. Some possible reasons are:

- as background reading for a mapping or research project.
- for abstracting specific data or results for a project.
- as part of a series of related papers to distil into a report or essay.
- for further reading around lectures.

Reading strategies

Adopt a strategy consistent with your reasons for reading the paper. The strategies are ranked in order of speed, and you can start with a rapid strategy and move down the list to a more time-consuming one if the paper warrants it.

- read the abstract only
- *skimming*: as above plus a glance at the figures and any concluding summary.
- *scanning*: as above plus reading the first lines of each section or paragraph, together with appropriate figure captions.
- *reading*: essentially word-by-word.

Summarizing strategies

Choose a strategy for summarizing the essentials of the paper, which is appropriate to your purpose:

- summary notes on a record card or database.
- highlighting or underlining on a photocopy of the paper.
- diagrammatic notes.
- full notes.

Moving on

- The reference list provides a guide to relevant past papers.
- A citation index (e.g. Web of Knowledge, Scopus) lists later papers that cite the one you've read.

11. Examinations

General points

Each candidate must enter a Research Project, the Seminar Paper and six Option Papers. All examination questions and projects will be marked by a separate MAST Board of Examiners. Each student will have a viva with an External Examiner, focussed primarily on the research project, but potentially other aspects of the course. The viva is not assessed, but may be used by the Examiners to resolve class boundaries.

Seminar Paper

The 'Seminar Paper' has two sections, with students answering one question from each. Section A will consist of a wide range of questions, using the year's Department and Bullard seminars as thematic guides. Questions for section B will draw broadly on aspects of the Easter field trip and the associated Easter Term seminars. Students are advised to read around a substantial range of seminar topics. Note: the format of this may differ this year depending on whether the field trip goes ahead. The Seminar Paper will be delivered online.

Option Papers

The majority of options will have a 2-hour examination during the main exam period. The exact format of these exams will be made known at the start of the year. Exam formats may include written answers, calculations or the description and discussion of specimens, thin-sections, etc. All of the Option papers in 2020-21 will be delivered online.

Some courses may run assessed practicals or formal practical examinations related to their course. The division of marks between theory and practical will be made known at the start of the year. The format of the assessed practicals may be a timed exercise at the end of the Lent or beginning of the Easter term, or assessed exercises taken during the course. They may involve specimen description and discussion, calculation, map exercises, writing short reports, or computer based exercises.

Viva

The Viva takes place during the last week of Easter term. It is a formal requirement for the MAST course, however it is not assessed and is relatively informal. As much as anything, the viva is an opportunity for you to talk about your project with someone who has read through it in detail, and to discuss any questions and concerns that may have arisen along the way. Most students find the viva very enjoyable.

Project report

The report of a research project shall be on a subject which may be either proposed by the candidate and approved by the Head of the Department of Earth Sciences, or chosen by the candidate from a list of approved subjects announced by the Head of the Department by the beginning of the Lent Term in the academic year immediately preceding the examination. Each candidate shall either obtain the approval of the Head of the Department for the subject proposed or notify the Head of the Department of the subject chosen from the list not later than the division of the Lent Term immediately preceding the examination.

Records of class and fieldwork

The records of classwork and fieldwork shall be submitted to the Examiners through the Teaching Support Manager (Helen Averill) not later than the last day of the written examinations and shall bear the signatures of the teachers under whose direction the work was performed.

EXAM STRUCTURE

Exam component	Duration (hours)	Marks	Number of exams	Total marks	Notes
Seminar paper	3	6%	1	6%	Two answers; one from each section. <u>Section A</u> : Topics covering a wide range of issues in the Earth Sciences. <u>Section B</u> : Topics based broadly on the Easter field trip and seminars
Option papers	2	9% each	6	54%	Six papers from a choice of 15, one for each option course. Some courses have associated assessed practicals
Research project report	-	40%	1	40%	Maximum 7,500 words
Viva	0.5		1		No formal mark. Used primarily to assess student engagement
TOTAL				100%	

12. Marking Criteria for Answers in Earth Sciences Written Papers

%	Class	Criteria
90-100	1	Brilliant answer. Exceptional understanding of subject and relevant literature. Outstanding critical analysis, full of insight Excellent organized, expressed and illustrated
80-89		Excellent understanding of subject. Answer goes well beyond lectures. Effective critical analysis and grasp of relevant literature Well organized, expressed and illustrated.
70-79		Very good understanding of course material. Sound evidence of outside reading. Some critical analysis. Well organized, expressed and illustrated.
60-69	2.1	Sound to good understanding of course material. Limited use of extra-course material. May contain minor factual errors or omissions. Well organized, coherent and adequately illustrated.
50-59	2.2	Based entirely on course material. Lacks some detail in content. Contains significant factual errors or omissions. Some deficiencies in organization, style or illustration.
40-49	3	Based imperfectly on course material. Contains numerous factual errors or omissions Answer has merit but lacks a sound structure. Concepts poorly expressed and illustrated..
30-39	Fail	Inadequate content, some maybe irrelevant. Poorly organized, expressed and illustrated
20-29		An attempt at the question, but lacking most relevant content.
10-19		An answer with only isolated glimpses of relevant content.
0-9		A nearly worthless or irrelevant answer.
<i>Expectations of appropriate 'critical analysis' and 'relevant literature' will vary from year to year of the Tripos</i>		

13. Laboratory Safety and Conduct

Covid-related safety

Particular rules have been set for individual teaching rooms to limit the transmission of Covid-19 in the Department. See the 'Standard Operating Procedures' and day-to-day updates on the relevant Moodle pages. More generally:

- Face masks must be worn at all times while you are in Department buildings.
- Each lecture and laboratory room has a maximum safe capacity that must not be exceeded.
- 2 m [social distancing](#) must be observed at all times. Students must not approach the lecturer, demonstrator or one another.
- Hand sanitisation must take place on entry and exit to the labs, and between handling samples or different pieces of equipment.
- Surfaces must be wiped down before and after each practical and supervision, by the student.

Please read the [Government guidance on safe practice related to Higher Education settings](#), the [NHS Covid-19 pages](#) and the [University's Covid-19 pages](#).

General safety

- Food or drink must **not** be consumed in any laboratory with the exception of water in a capped bottle.
- All bags, coats and cycle helmets are to be kept off the benches.
- If the fire alarm sounds, you will hear a very loud continuously ringing bell. On the instruction of the demonstrator in charge. Leave the building and assemble on the lawn by the Department of Archaeology & Anthropology. Do not stop to collect personal belongings and do not re-enter the building until the fire brigade has given the all-clear.
- Handle ALL specimens with care. Many, especially the palaeontological material, are of museum display quality and are irreplaceable.

14. Feedback Processes

Feedback processes

If you are concerned specifically about the quality or style of teaching that you are receiving, there are a number of additional avenues for your comments:

- **Comments books** are available in the laboratories, mainly for suggested improvements to the content and format of practical classes. The comments are acted on by the class organiser.
- **Online course questionnaires** are issued via Moodle at the end of each part of the course for you to assess the various components; lectures, practicals and supervisions pertaining to that subject. **Please take the time to fill them in.** They are evaluated by the course coordinator, who suggests improvements to individual lecturers or practical organizers or passes on comments on more strategic issues to the Department's Teaching Committee. Positive and negative feedback are both useful to us in assessing the effectiveness of courses.
- **A student representative** from each NST course taught by the Department sits on the Teaching Liaison Committee along with members of the Teaching Committee. Your representative will be appointed and introduced to your class before the end of the Michaelmas Term. The Teaching Liaison Committee discusses general teaching issues such as re-organisation of whole courses, provision of teaching resources, and co-ordination of University and College teaching. It passes recommendations on to the Teaching Committee, which has the central role in undergraduate teaching matters in the Department.
- **Feedback** on supervisions should be directed primarily through your College system. Concerns about your supervision arrangements should be voiced to your subject Director of Studies (ie in Earth Sciences or possibly Physical Sciences) or to your NST Director of Studies. Your Tutor may be able to advise you, if there are personal as well as academic issues involved. However, issues of supervision content and style are most effectively raised directly with supervisors themselves. Supervisions are meant to be individually tailored, and supervisors expect you to say if you are not getting the best value from them.
- **College questionnaires** provide another route for commenting on the supervision system. The Department will try to resolve major issues concerning supervisions, if College structures have failed to do so. Problems in particular Colleges can be dealt with by the Teaching Liaison Committee, although sensitive issues involving individual supervisors may be best discussed with the Chair of the Teaching Committee.
- If none of these routes seems satisfactory, please feel free to contact the MAST Course Coordinator, Nick Butterfield (Room E320, 33379, njb1005@cam.ac.uk), or the Teaching Support Manager, Helen Averill (Room N14, 68330, hpd20@cam.ac.uk).

Complaint procedures

If you are unhappy with the experience you have received from the department, faculty, service or staff member, the University has a Student Complaint Procedure for you to use in order to try and resolve the situation. All information regarding the Student Complaint Procedure can be found on the [Student Complaints web page](#).

At a local level if any issues arise which need action details should be passed on to the Teaching Support Manager or discussed with your Director of Studies in the department.

Examination review procedure

The University has robust policies in place to ensure that all examination results are accurate. However, something unusual may have taken place in the examination and you may want to check that the examiners were aware of the circumstances and that they have been taken into account. If you have any concerns about examination results you can request a review using the Examination Review Procedure, details of which can be found on the [Examination reviews web page](#).

15. Earth Sciences and Disability

We aim to make our courses accessible to all students as far as possible. You should have received help or advice about any disability that might have a substantial and long-term adverse effect on your ability to follow the course or take the examinations; for instance, dyslexia or colour blindness.

If there is any new information about any relevant disability that we should know, please inform your Tutor, your College Director of Studies or Supervisor in Earth Sciences and the Teaching Support Manager, Helen Averill at hpd20@cam.ac.uk soon as possible. They will discuss with the course organisers the appropriate ways in which you can be helped to get the most out of this year's teaching.

16. Department of Earth Sciences: Plagiarism Statement

(This is a shortened and more subject-specific version of the University statement, the full version of which can be found on the [University website](#)).

Definition and scope

Plagiarism is defined as submitting as one's own work, irrespective of intent to deceive, that which derives in part or in its entirety from the work of others without due acknowledgement.

Plagiarism is the unacknowledged use of the work of others as if this were your own original work. It is always wrong and a breach of academic integrity, whether in supervision exercises, project reports, exam answers or published papers. The University regards plagiarism as a serious offence. The penalties for plagiarism may be severe and may lead to failure to obtain your degree. The University reserves the right to check any submitted work for plagiarism, and can do so with increasingly sophisticated software.

The golden rule is that there should be no doubt as to which parts of your work are your own original work and which are the rightful intellectual property of someone else.

Plagiarism may be due to copying (using another person's language or ideas as if they are your own) or collusion (where collaboration is concealed to gain unfair advantage).

Methods and media

Methods of plagiarism include:

- Quoting directly another person's language, data or illustrations without clear indication that the authorship is not your own and without due acknowledgement of the source.
- Paraphrasing the critical work of others without due acknowledgement. Changing words or their order does not avoid plagiarism, if you are using someone else's original ideas without acknowledgement.
- Using ideas taken from someone else without reference to the originator.
- Cutting and pasting from the Internet to make a pastiche of online sources.
- Colluding with another person, including another candidate (other than as explicitly permitted for joint project work).
- Submitting as your own work research that has been contributed by others to a joint project.
- Submitting work that has been done in whole or in part by someone else on your behalf (such as commissioning work from a professional agency);
- Submitting work that you have already submitted for a qualification at another institution or for a publication without declaring it and clearly indicating the extent of overlap.
- Deliberately reproducing someone else's work in a written examination.

Plagiarism can occur with respect to all types of sources and in all media:

- not just text, but also figures, photographs, computer code etc,
- not just material published in books and journals, but also downloaded from websites or drawn from other media,

- not just published material but also unpublished works, including lecture handouts and the work of other students.

Avoiding plagiarism

The conventions for avoiding plagiarism in the Earth Sciences are as follows:

- When presenting the views and work of others, cite the source in ways such as ‘...as shown by Jones (1938)’.
- If quoting a secondary source, to which you have not gained access, make this clear in ways such as ‘...Hailstone (1802) as discussed by Marr (1916, p. 176).’
- If quoting text verbatim, use quotation marks or indented text and a citation; e.g. “Many of the great movements above described, appear to have been produced by an action both violent and of short duration.” (Sedgwick 1836).
- If using an exact or redrawn copy of a figure from another work, cite the work in the figure caption; e.g. ‘redrawn from Hughes (1866).’
- If incorporating data into a figure from another source, cite the source in the figure caption; e.g. ‘orientation data taken from Whittington (1938).’
- Collaboration with staff or other students during project research may arise during, for instance, Part II or MAST projects. If there is likely to be any doubt as to who contributed which parts of submitted work, make this clear in the text wherever necessary; e.g. ‘Prof. I.N. McCave supplied the comparative data on contourites in table 3.’
- Wherever a source is cited, the full bibliographic reference – including title, journal, volume and page numbers – must be given at the end of the report or essay, except in an essay done in exam conditions. Candidates are not required to make full citations in written examinations but should reference where appropriate.

Checking for Plagiarism

The University subscribes to Turnitin UK software which provides an electronic means of checking work for originality and is widely used in UK universities. Visit the Departmental website to find the document explaining how Turnitin UK will be used by the Department of Earth Sciences and which explains the implications of submitting your work to the software. Written work will only be checked if a candidate is suspected of plagiarism.

Any graduate student submitting written work suspected of plagiarism may also have their material checked using Turnitin.